

# **Overview of JPNIC activity**

by

**Naomasa Maruyama**

maruyama@nic.ad.jp

**JPNIC**

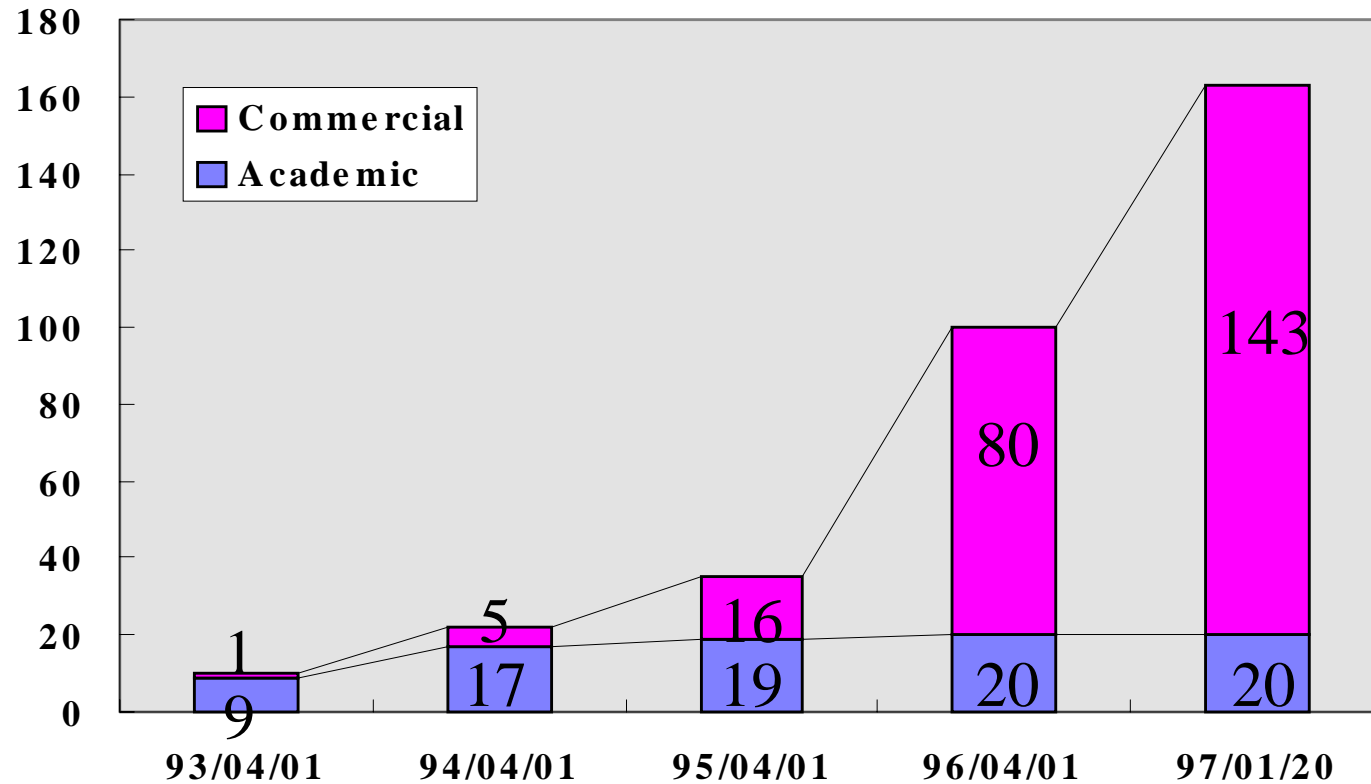
at APNIC meeting Jan. 31, 1997.

---

## **Contents:**

- **History and Organization**
- **JP domains**
- **Recent topics**
- **Statistics**

# JPNIC Member ISPs



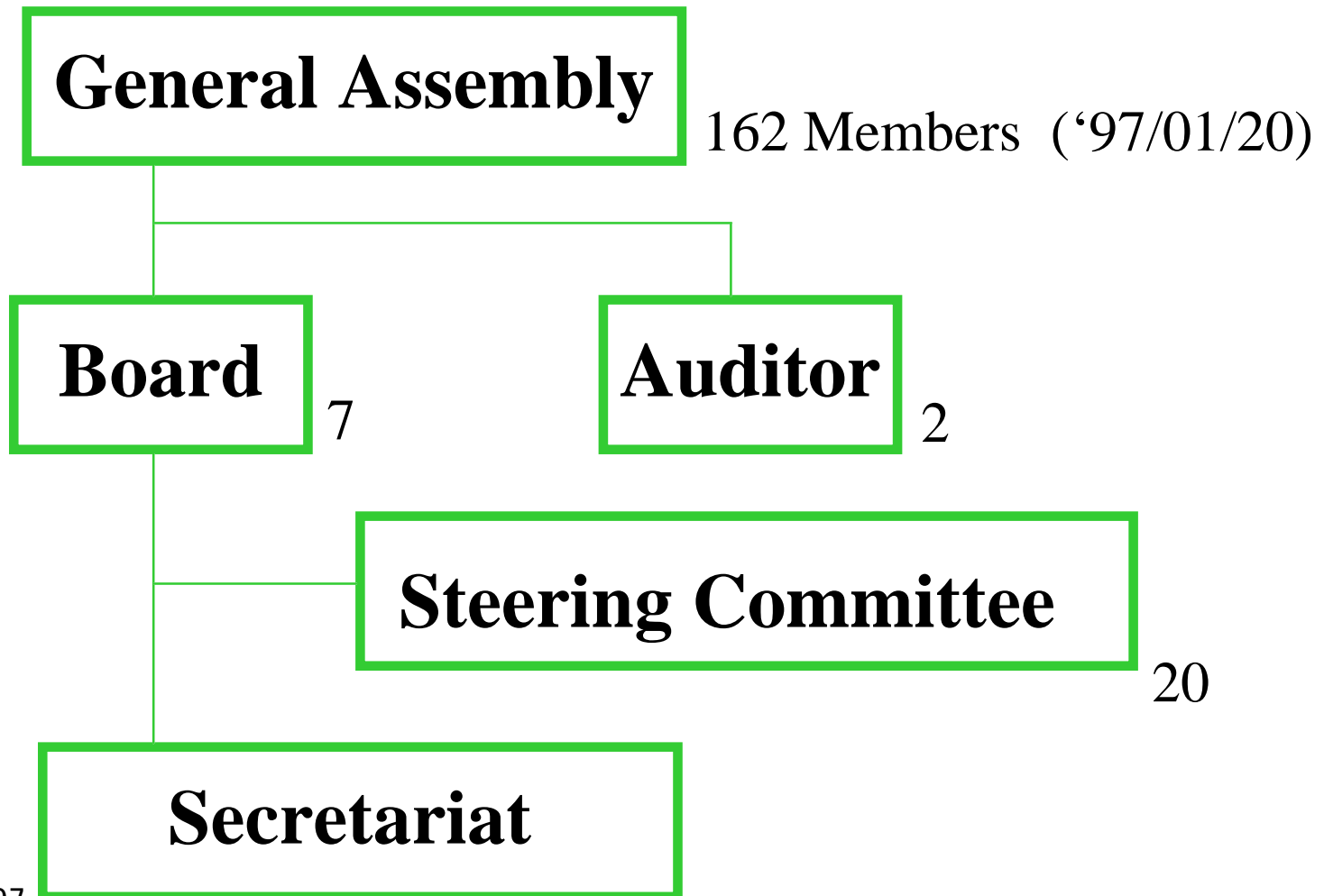
[ftp://ftp.nic.ad.jp/pub/jpnic-pub/stat/num\\_of\\_members](ftp://ftp.nic.ad.jp/pub/jpnic-pub/stat/num_of_members)

Jan. 31, 1997

*Japan Network Information Center*

# Organization

---



Jan. 31, 1997

*Japan Network Information Center*

# Budget, Staff

---

- FY95

- Budget US\$ 1.0 million (Member: 70% Assignment: 30%)
- 6 Fulltime staff + 1 Parttime Staff  
+ about 20 voluntary staff

- FY96

- Budget US\$ 4.7 million (Member: 38% Assignment: 42%)
- 8 Fulltime Staff + 2 Parttime Staff  
+ an advisory staff of about 20

# Membership Fee

---

- Entrance Fee(One-time fee)
  - US\$5,000
- Annual Membership Fee
  - Academic ISP member
    - \$200 \* Organizations (# of Connected Domains)
  - Commercial ISP member
    - \$5,000 + \$200 \* Organizations (# of Connected Domains)

# Assignment Charge

---

- History

- June, 1995 -

- Fee

- \$200 each IP address assignment application

- independent of address space

- \$200 each domain name assignment application

# Structure of JP Domains

---

- AD.JP: Network Administrative Organization
- CO.JP: Commercial Companies
- AC.JP: Academic Organizations
- GO.JP: Governmental Agencies
- OR.JP: Other types of Organizations
- NE.JP: Network Service Domains(from Nov. 6, 1996)
- GEO: Geographical Domains
  - TOKYO.JP
  - YOKOHAMA.JP
  - ...

# Policy of JP domains

---

- First come First Served
- One domain name for one organization
- Non transferable
- Local presence in Japan (from Sep. 1, 1996)
- [ ● Uniqueness in the third level (until Dec. 9, 1996)]

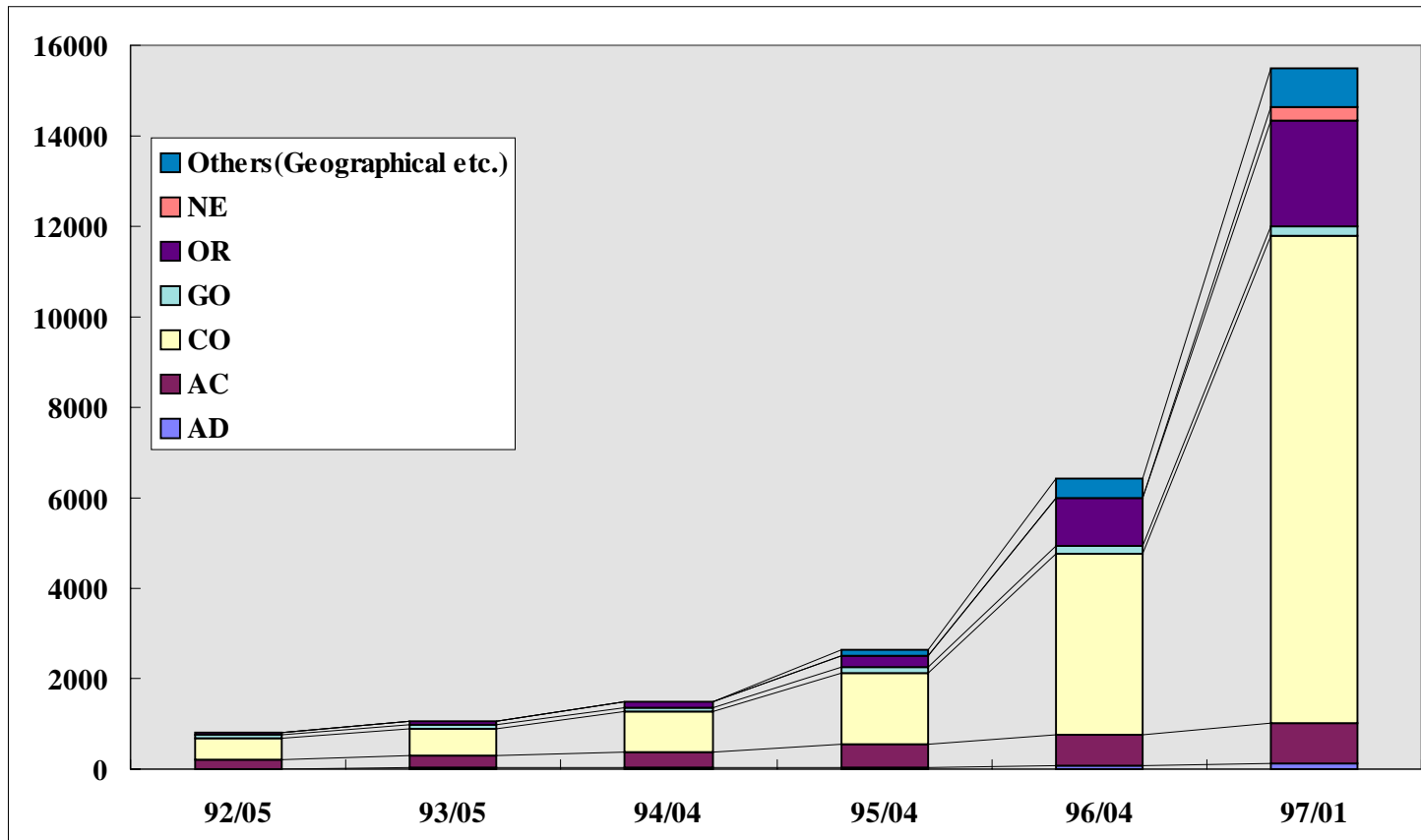


# Recent Topics

---

- Introducing ne.jp domains (Nov. 6, 1996)
- Removing “third level uniqueness” restriction  
(Dec. 10, 1996)
- Revising documents for IP address assignment to reflect rfc2050
- Discussion on trade mark domain names
- Incorporation of JPNIC as a government authorized organization (probably be done by the end of March 1997)

# JPNIC Allocated Domains



[ftp://ftp.nic.ad.jp/pub/jpnic-pub/stat/Allocated\\_Domains](ftp://ftp.nic.ad.jp/pub/jpnic-pub/stat/Allocated_Domains)

Jan. 31, 1997

*Japan Network Information Center*

# Domain Names Assignment (FY1996)

11

	AD	AC	CO	GO	OR	NE	GEO	TOTAL
96/01	3	19	338	8	110	0	25	503
96/02	4	30	333	7	111	0	34	519
96/03	2	23	463	9	152	0	60	709
96/04	8	30	547	8	148	0	36	777
96/05	3	34	614	7	130	0	114	902
96/06	3	27	682	6	163	0	116	997
96/07	7	29	803	5	194	0	74	1112
96/08	2	18	864	5	173	0	32	1094
96/09	3	18	932	2	165	0	24	1144
96/10	2	14	885	3	160	0	27	1091
96/11	1	12	858	5	90	67	33	1066
96/12	14	24	817	4	98	125	23	1105
<b>Total</b>	<b>52</b>	<b>278</b>	<b>8136</b>	<b>69</b>	<b>1694</b>	<b>192</b>	<b>598</b>	<b>11019</b>

Jan. 31, 1997

*Japan Network Information Center*

# IP Address Allocations/Assignments (FY1996)

	Assignment			Reutrn		Re- name	From APNIC*	Allocations to ISP				
	Org.	B	C	B	C			/16	/17	/18	/19	/20
96/01	50	0	88	0	76	0	0	1	1	0	0	5
96/02	88	0	165	0	20	0	8	2	0	1	0	3
96/03	69	0	153	1	39	0	0	1	1	2	0	6
96/04	55	0	100	0	26	0	6	3	1	2	2	11
96/05	42	0	62	0	46	0	6	0	0	0	1	9
96/06	35	0	74	0	22	1	0	0	1	0	2	8
96/07	39	0	105	0	19	8	8	3	1	1	2	8
96/08	24	0	41	1	42	4	0	0	1	0	2	4
96/09	12	0	54	0	17	4	0	1	0	1	1	8
96/10	15	0	42	0	23	7	8	1	1	3	1	11
96/11	11	0	21	0	36	5	0	3	1	1	1	9
96/12	10	0	28	0	42	11	16	1	2		1	11
<b>Total</b>	450	0	933	2	408	40	52	16	10	11	13	93

\*Number of /16 blocks allocation from APNIC

# Transaction of IP Address Assignments

13

	From JPNIC	From ISPs
96/01	50	491
96/02	88	387
96/03	69	489
96/04	55	549
96/05	42	616
96/06	35	546
96/07	39	704
96/08	24	664
96/09	12	566
96/10	15	654
96/11	11	636
96/12	10	596
Total	450	6898

Jan. 31, 1997

*Japan Network Information Center*

# AS Number Assignments

---

- 96 AS numbers are delegated to JPNIC
  - 2497-2528 from InterNIC
  - 4672-4735 from APNIC
- 87 AS numbers are assigned
  - 2497-2528, 4672-4726