

Overview of JPNIC activity

by

Naomasa Maruyama

maruyama@nic.ad.jp

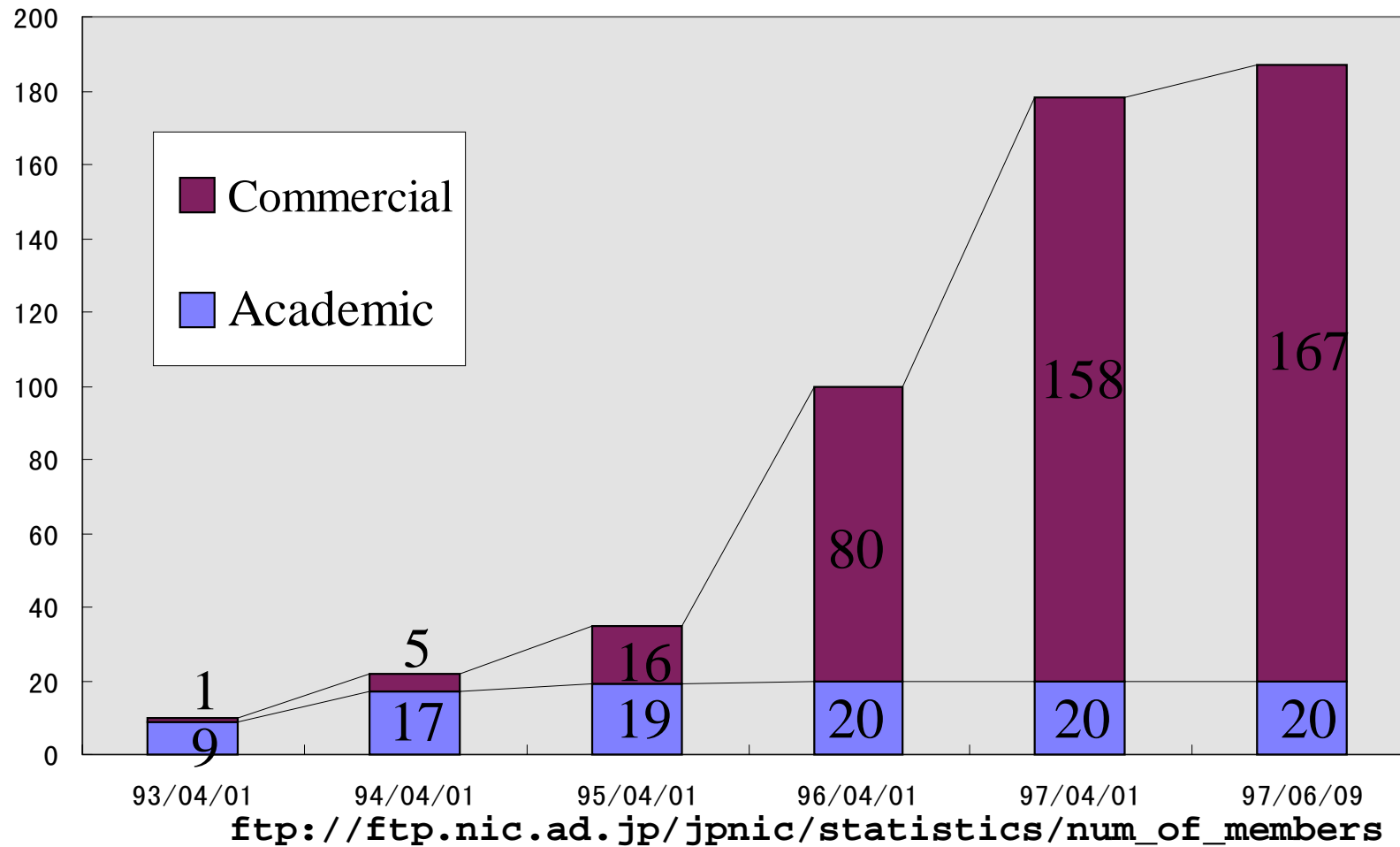
JPNIC

at APNIC meeting Jun. 22, 1997.

Contents:

- **History and Organization**
- **JP domains**
- **Recent topics**
- **Statistics**

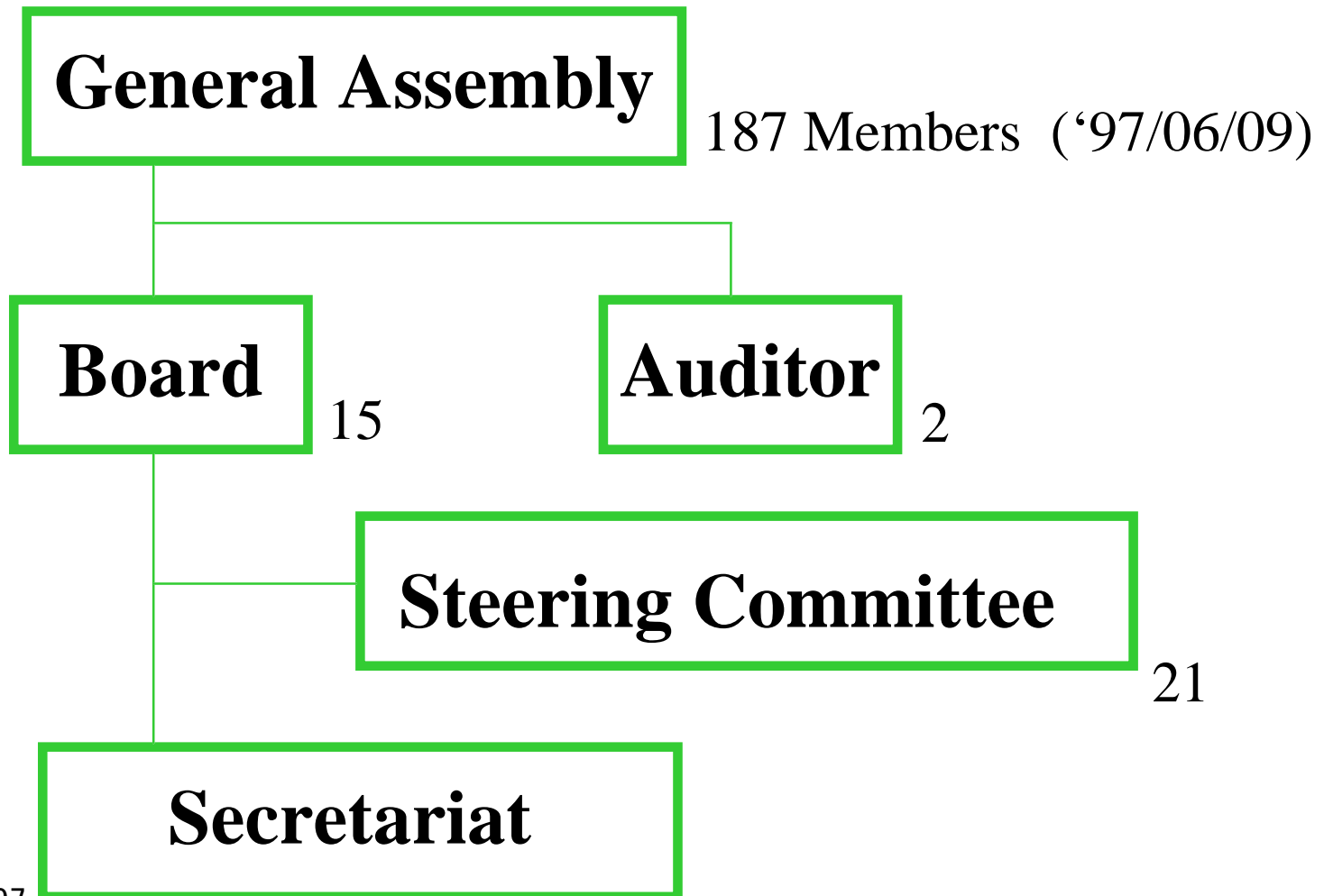
JPNIC Member ISPs



Jun. 22, 1997

Japan Network Information Center

Organization



Jun. 22, 1997

Japan Network Information Center

Budget, Staff

- FY95
 - Budget US\$ 1.0 million (Member: 70% Assignment: 30%)
 - 6 Fulltime staff + 1 Parttime Staff + about 20 voluntary staff
- FY96
 - Budget US\$ 4.7 million (Member: 38% Assignment: 42%)
 - 8 Fulltime Staff + 2 Parttime Staff + an advisory staff of about 20
- FY97
 - Budget US\$ 4.7 million (Member: 41% Assignment: 23%)
 - 11 Fulltime Staff + 1 Parttime Staff + an advisory staff of about 20

Membership Fee

- Entrance Fee(One-time fee)
 - US\$5,000
- Annual Membership Fee
 - Academic ISP member
 - \$100 * Organizations (# of Connected Domains)
 - Commercial ISP member
 - \$3,000 + \$100 * Organizations (# of Connected Domains)

Assignment Charge

- History
 - June, 1995 -
- Fee
 - \$200 each IP address assignment application
 - independent of address space
 - \$200 each domain name assignment application
- Fee(via Member ISP)
 - \$50 each IP address assignment application
 - independent of address space
 - \$50 each domain name assignment application

Structure of JP Domains

- AD.JP: Network Administrative Organization
- CO.JP: Commercial Companies
- AC.JP: Academic Organizations
- GO.JP: Governmental Agencies
- OR.JP: Other types of Organizations
- NE.JP: Network Service Domains(from Nov. 6, 1996)
- GEO: Geographical Domains
 - TOKYO.JP
 - YOKOHAMA.JP
 - ...

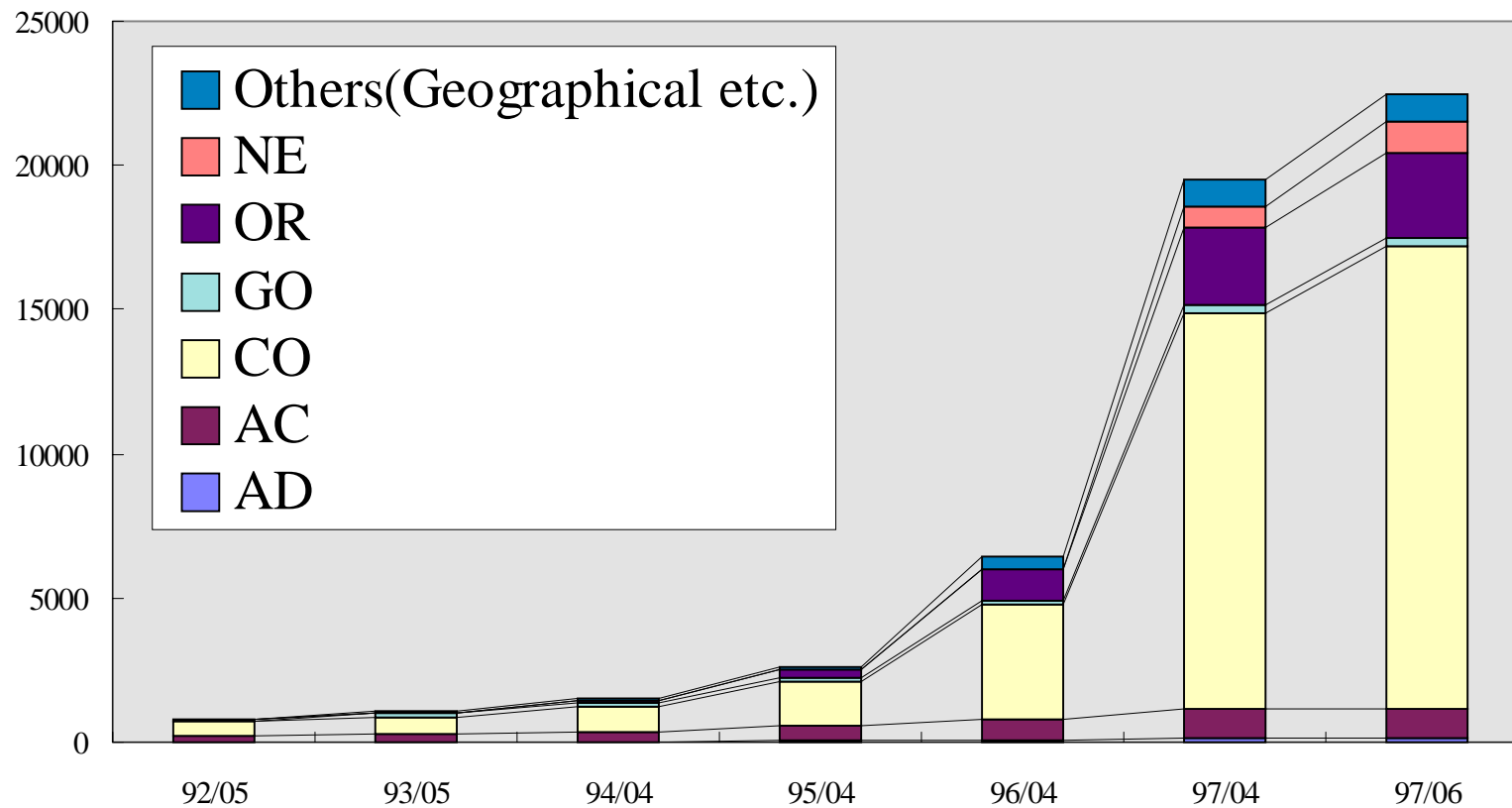
Policy of JP domains

- First come First Served
- One domain name for one organization
- Non transferable
- Local presence in Japan (from Sep. 1, 1996)
- [● Uniqueness in the third level (until Dec. 9, 1996)]

Recent Topics

- Introducing ne.jp domains (Nov. 6, 1996)
- Removing “third level uniqueness” restriction
(Dec. 10, 1996)
- Revising documents for IP address assignment to
reflect rfc2050
- Discussion on trade mark domain names
- Incorporation of JPNIC as a government authorized
association(Mar. 31, 1997)
- Change membership fee and assignment charge
(Apr. 1, 1997)

JPNIC Allocated Domains



ftp://ftp.nic.ad.jp/jpnic/statistics/Allocated_Domains

Jun. 22, 1997

Japan Network Information Center

Domain Names Assignment (FY1996)

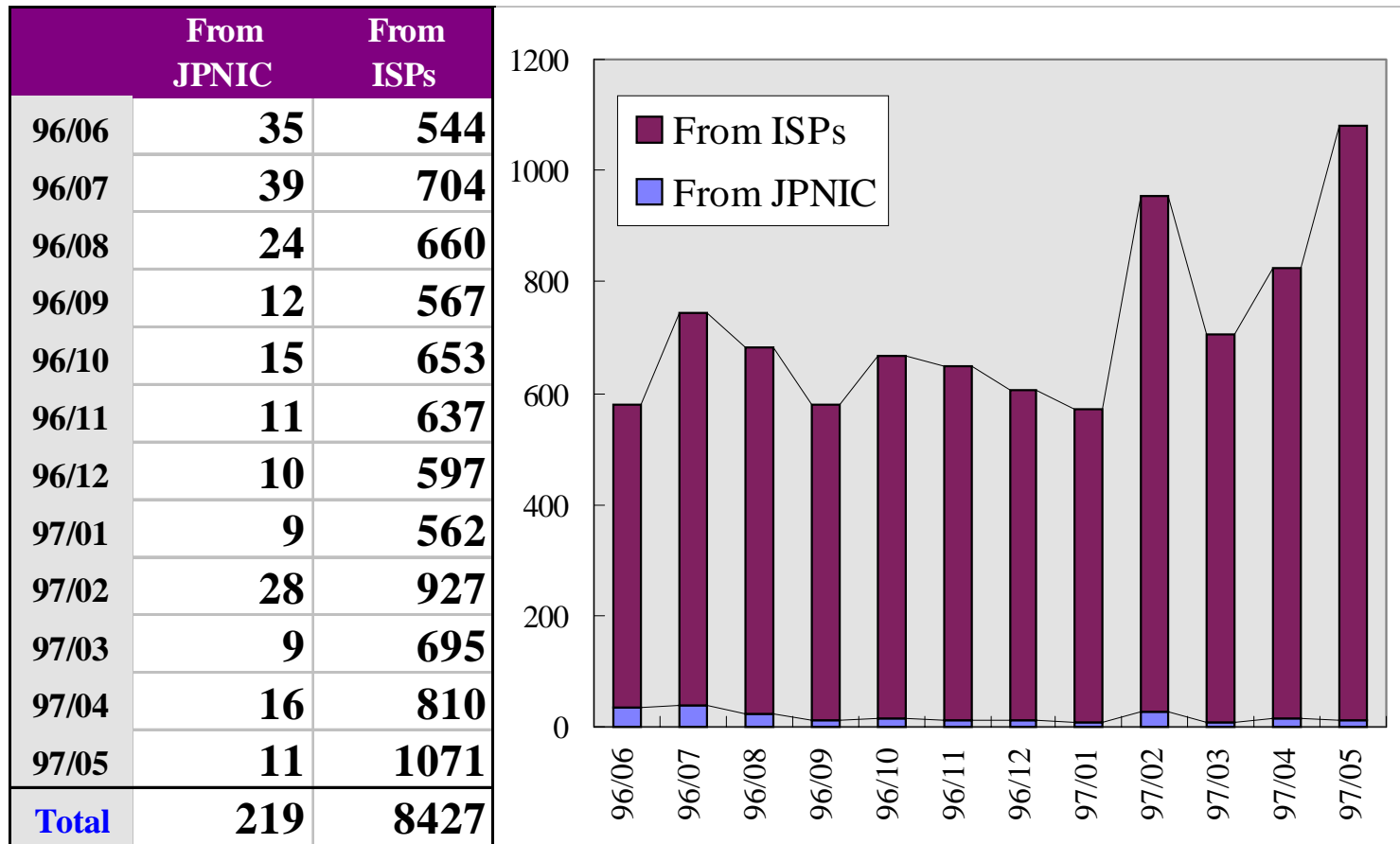
	AD	AC	CO	GO	OR	NE	GEO	TOTAL
96/06	3	27	682	6	163	0	116	997
96/07	7	29	803	5	194	0	74	1112
96/08	2	18	864	5	173	0	32	1094
96/09	3	18	932	2	165	0	24	1144
96/10	2	14	885	3	160	0	27	1091
96/11	1	12	858	5	90	67	33	1066
96/12	14	24	817	4	98	125	23	1105
97/01	4	25	976	3	124	98	50	1280
97/02	8	26	958	7	108	68	38	1213
97/03	4	39	1218	14	171	100	55	1601
97/04	5	32	1168	5	121	82	51	1464
97/05	6	28	1199	8	174	124	40	1579
Total	59	292	11360	67	1741	664	563	14746

IP Address Allocations/Assignments (FY1996)

	Assignment									Return		Re- name	From APNIC*	Delegations to ISP						
	Org.	B	/24	/25	/26	/27	/28	/29	/30	B	C			/16	/17	/18	/19	/20	/21	/22
96/06	35	0	74							0	22	1	0	0	1	0	2	8		
96/07	39	0	105							0	19	8	8	3	1	1	2	8		
96/08	24	0	41							1	42	4	0	0	1	0	2	4		
96/09	12	0	54							0	17	4	0	1	0	1	1	8		
96/10	15	0	42							0	23	7	8	1	1	3	1	11		
96/11	11	0	21							0	36	5	0	3	1	1	1	9		
96/12	10	0	28							0	42	11	16	1	2	0	1	11		
97/01	9	0	20							0	25	7	0	0	1	0	2	12		
97/02	28	0	65							0	58	5	0	3	2	0	2	12		
97/03	9	0	23	0	0	0	0	0	0	0	32	6	0	1	0	1	0	1	0	0
97/04	16	0	13	2	2	1	0	0	0	1	29	24	0	0	2	0	1	2	1	0
97/05	11	0	18	0	1	0	0	0	0	1	47	15	0	0	1	0	3	2	1	1
Total	219	0	504	2	3	1	0	0	0	3	392	97	32	13	13	7	18	88	2	1

*Number of /16 blocks allocation from APNIC

Transaction of IP Address Assignments



IP Address Assignments by JPNIC Member ISPs

Year/ Month	*1	*2	*3	*4	*5	*6	# of assignments(smaller than /24)							
							/25	/26	/27	/28	/29	/30	/31	/32
96/06	544	33	365	192	518	23	30	31	57	57	11	4	0	2
96/07	704	49	444	265	803	75	61	56	73	55	15	3	0	2
96/08	660	41	437	240	547	74	49	63	62	44	18	1	0	3
96/09	567	39	365	210	693	54	43	44	60	45	12	4	0	2
96/10	653	31	417	263	742	67	51	59	75	52	25	0	0	1
96/11	637	43	359	280	547	78	42	58	81	66	24	5	0	4
96/12	597	60	316	272	552	53	29	51	75	82	28	7	0	0
97/01	562	68	274	263	479	48	43	40	78	80	21	0	0	1
97/02	927	94	422	478	873	120	61	65	139	129	71	9	0	4
97/03	695	51	538	374	423	115	42	78	99	113	49	12	0	1
97/04	810	59	684	574	353	76	63	68	105	243	165	10	0	4
97/05	1071	64	865	740	604	159	40	59	80	401	184	3	0	2
Total	8427	632	5486	4151	7134	942	554	672	984	1367	623	58	0	26

*1 # of assignments

*3 # of charged assignments

*5 # of assigned/allocated C class addresses

*2 # of returns

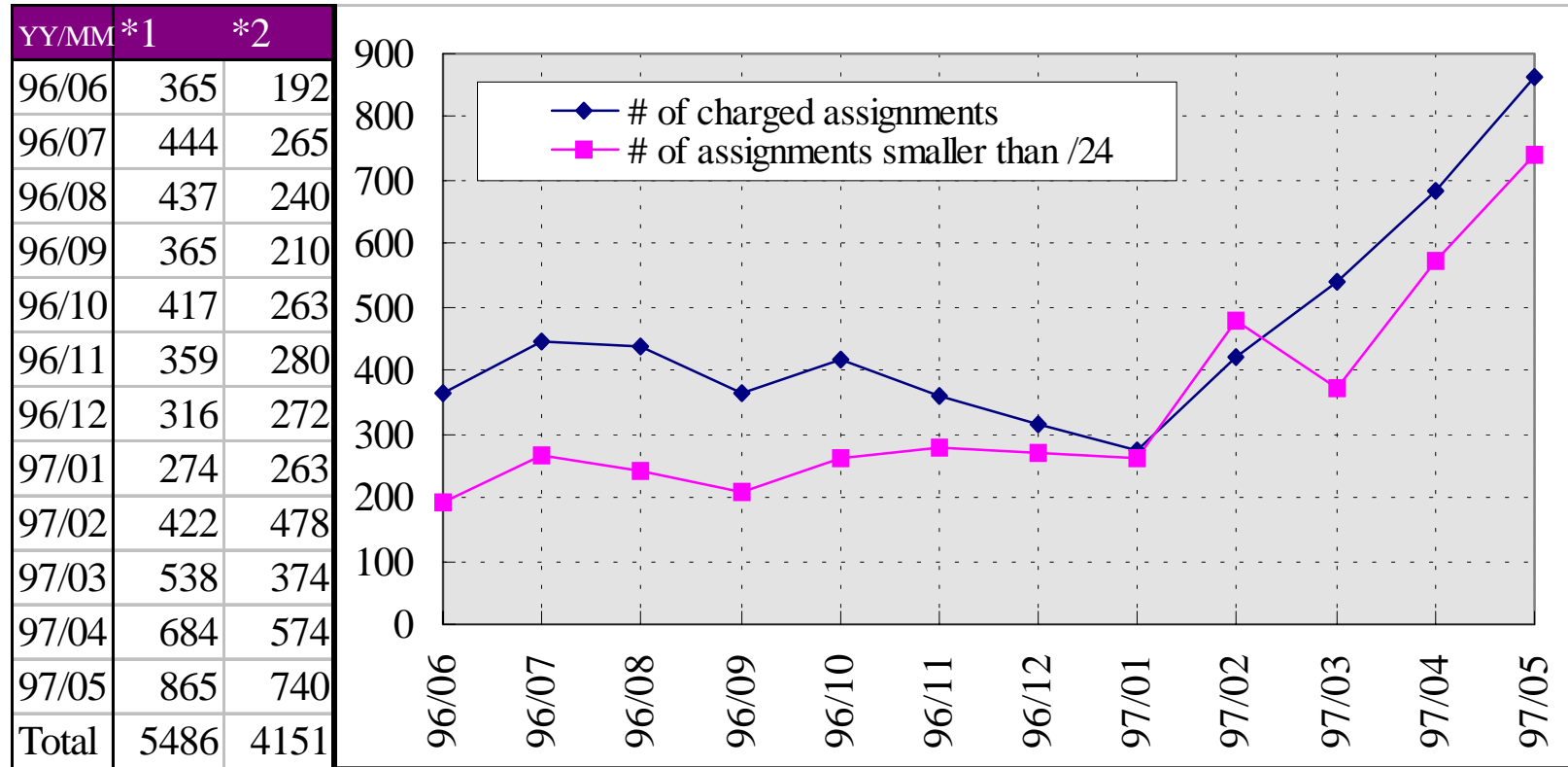
*4 # of assignments smaller than /24

*6 # of in-addr.arpa. delegate requests
for divided C classes

Jun. 22, 1997

Japan Network Information Center

Number of Assignments Smaller Than /24 by JPNIC Member ISPs



*1 # of charged assignments

*2 # of assignments smaller than /24

Jun. 22, 1997

Japan Network Information Center

AS Number Assignments

- 128 AS numbers are delegated to JPNIC
 - 2497-2528 from InterNIC
 - 4672-4735 from APNIC
 - 7500-7531 from APNIC
- 108 AS numbers are assigned
 - 2497-2528, 4672-4735, 7500-7511