

# Overview of JPNIC activity

by

**Naomasa Maruyama**

maruyama@nic.ad.jp

**JPNIC**

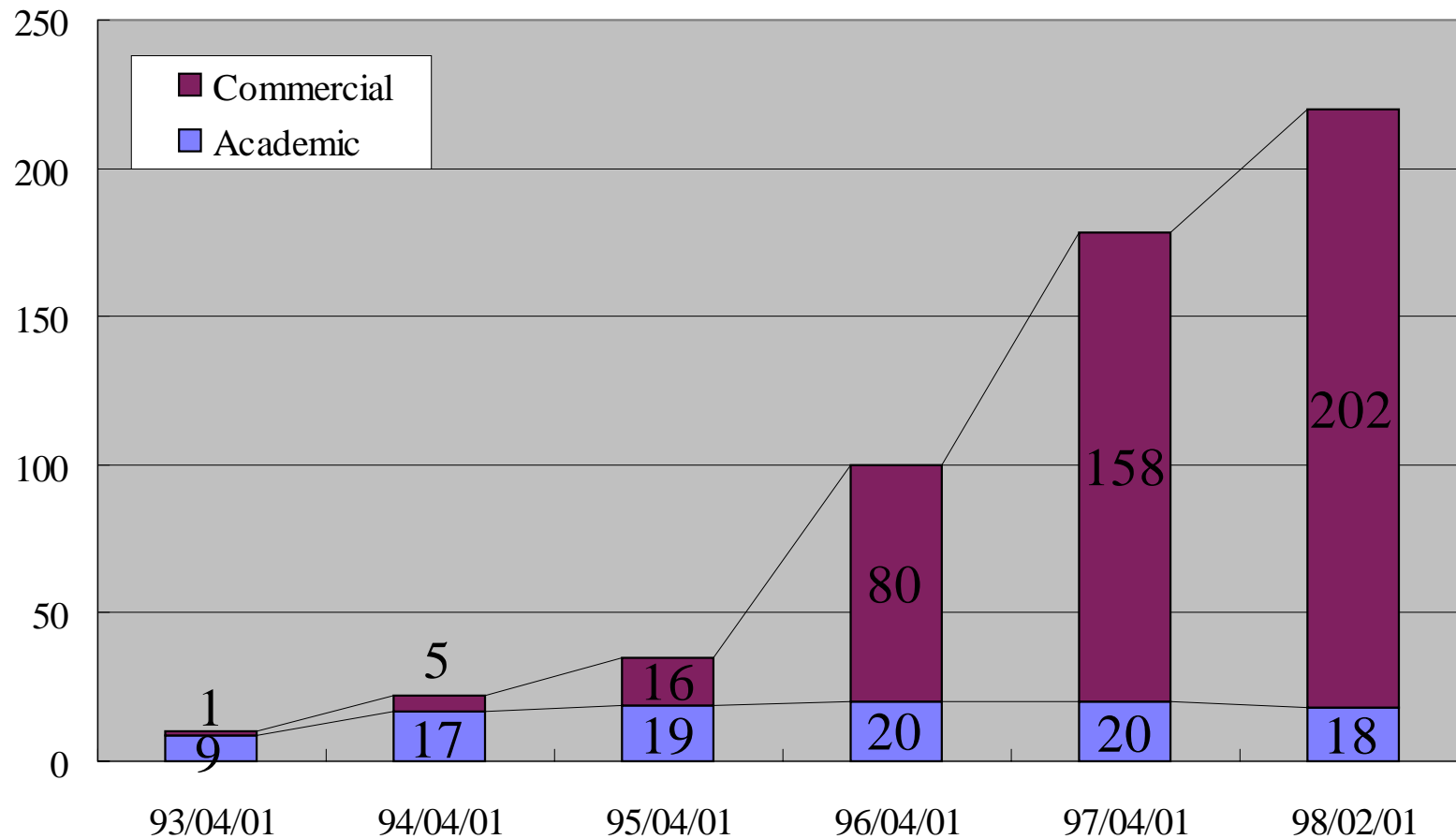
at APRICOT meeting Feb. 18, 1998.

---

## Contents:

- ◉ **History and Organization**
- ◉ **JP domains**
- ◉ **Recent topics**
- ◉ **Statistics**

# JPNIC Member ISPs



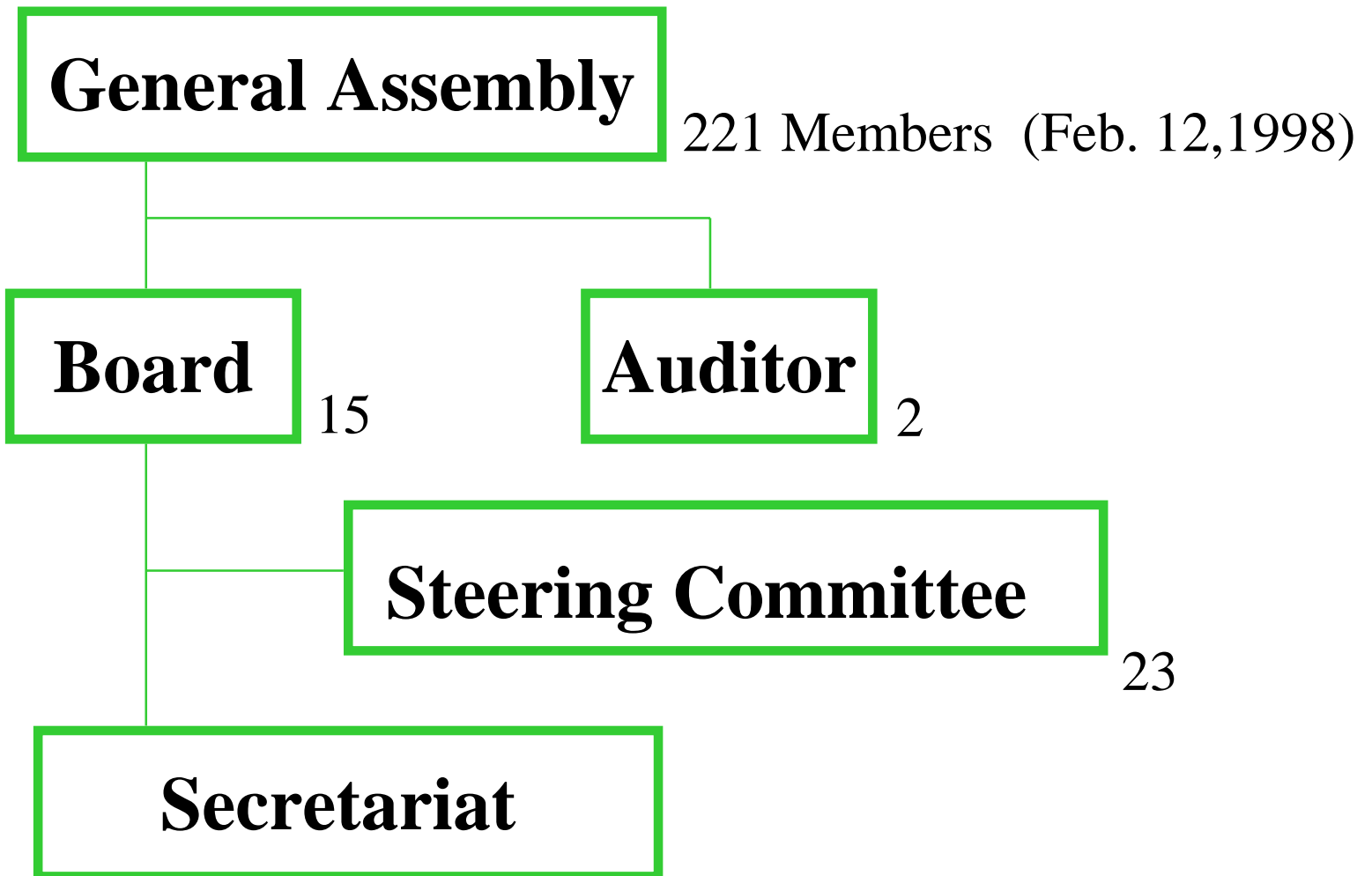
[ftp://ftp.nic.ad.jp/jpnict/statistics/num\\_of\\_members](ftp://ftp.nic.ad.jp/jpnict/statistics/num_of_members)

Feb. 18, 1998

Japan Network Information Center

# Organization

---



*Feb. 18, 1998*

*Japan Network Information Center*

# Budget, Staff

---

## ○ FY95

- Budget US\$ 1.0 million (Member: 70% Assignment: 30%)
- 6 Fulltime staff + 1 Parttime Staff + about 20 voluntary staff

## ○ FY96

- Budget US\$ 4.7 million (Member: 38% Assignment: 42%)
- 8 Fulltime Staff + 2 Parttime Staff + an advisory staff of about 20

## ○ FY97

- Budget US\$ 4.7 million (Member: 41% Assignment: 23%)
- 11 Fulltime Staff + 1 Parttime Staff + an advisory staff of about 20

# Membership Fee

---

## ⌚ Entrance Fee(One-time fee)

- US\$5,000

## ⌚ Annual Membership Fee

- Academic ISP member
  - \$100 \* Organizations (# of Connected Domains)
- Commercial ISP member
  - \$3,000 + \$100 \* Organizations (# of Connected Domains)

# Assignment Charge

---

- History
  - June, 1995 -
- Fee
  - \$200 each IP address assignment application
    - independent of address space
  - \$200 each domain name assignment application
- Fee(via Member ISP)
  - \$50 each IP address assignment application
    - independent of address space
  - \$50 each domain name assignment application

# Structure of JP Domains

---

- AD.JP: Network Administrative Organization
- CO.JP: Commercial Companies
- AC.JP: Academic Organizations
- GO.JP: Governmental Agencies
- OR.JP: Other types of Organizations
- NE.JP: Network Service Domains (from Nov. 6, 1996)
- GR.JP: Group Domains (from Dec. 1, 1997)
- GEO: Geographical Domains
  - TOKYO.JP
  - YOKOHAMA.JP
  - ...

# Policy of JP domains

---

- First come First Served
- One domain name for one organization
- Non transferable
- Local presence in Japan (from Sep. 1, 1996)

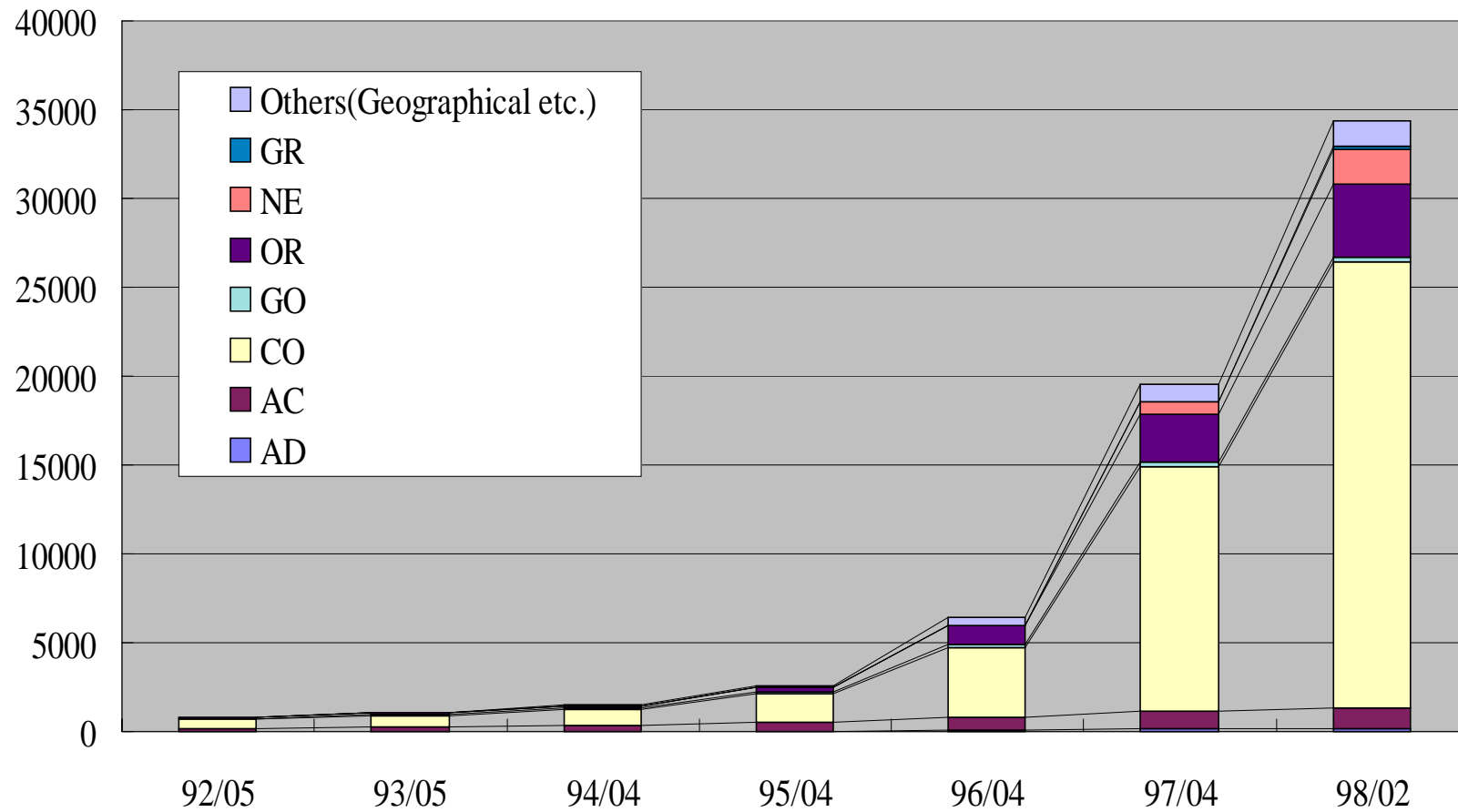


# Recent Topics

---

- ⌚ Introducing gr.jp domains (Dec. 1, 1997)
- ⌚ Sponsored a gTLD-MoU information session  
(Nov. 7, 1997)
- ⌚ Change membership fee and assignment charge  
(Apr. 1, 1997)
- ⌚ Incorporation of JPNIC as a government authorized  
association(Mar. 31, 1997)
- ⌚ Revising documents for IP address assignment to  
reflect rfc2050
- ⌚ Discussion on trade mark domain names

# JPNIC Registered Domains



[ftp://ftp.nic.ad.jp/jpnict/statistics/Allocated\\_Domains](ftp://ftp.nic.ad.jp/jpnict/statistics/Allocated_Domains)

Feb. 18, 1998

Japan Network Information Center

# Domain Names Assignment (FY1997)

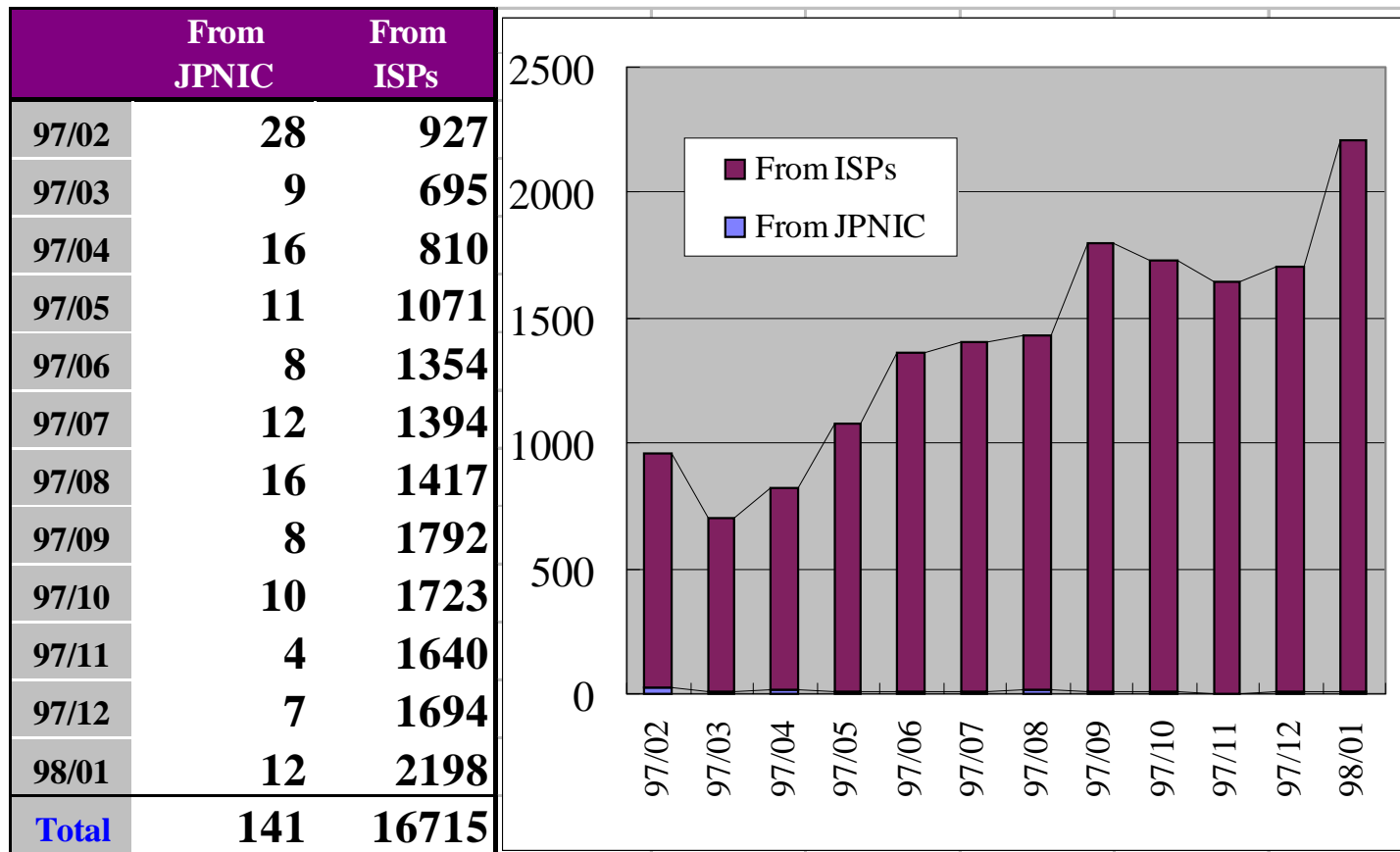
	AD	AC	CO	GO	OR	NE	GR	GEO	TOTAL
97/02	8	26	958	7	108	68		38	1213
97/03	4	39	1218	14	171	100		55	1601
97/04	5	32	1168	5	121	82		51	1464
97/05	6	28	1199	8	174	124		40	1579
97/06	1	28	1444	0	151	164		89	1877
97/07	3	31	1380	3	197	126		64	1804
97/08	4	31	1294	8	153	91		77	1658
97/09	4	18	1208	2	141	104		74	1551
97/10	5	19	1421	7	170	100		87	1809
97/11	3	18	1203	4	145	94		67	1534
97/12	3	18	1395	6	143	118	74	85	1842
98/01	1	26	1304	3	108	110	99	62	1713
<b>Total</b>	<b>47</b>	<b>314</b>	<b>15192</b>	<b>67</b>	<b>1782</b>	<b>1281</b>	<b>173</b>	<b>789</b>	<b>19645</b>

# IP Address Allocations/Assignments (FY1997)

	Assignments									Reutrn		Re- name	From APNIC*	Allocations to ISP						
	Org	B	/24	/25	/26	/27	/28	/29	/30	B	C			/16	/17	/18	/19	/20	/21	/22
97/02	28	0	65	-	-	-	-	-	-	0	58	5	0	3	2	0	2	12	-	-
97/03	9	0	23	0	0	0	0	0	0	0	32	6	0	1	0	1	0	1	0	0
97/04	16	0	13	2	2	1	0	0	0	1	29	24	0	0	2	0	1	2	1	0
97/05	11	0	18	0	1	0	0	0	0	1	47	15	0	0	1	0	3	2	1	1
97/06	8	0	9	1	2	0	0	0	0	0	63	9	0	0	1	0	2	0	2	3
97/07	12	0	21	0	0	0	1	0	0	0	65	10	16	2	1	1	2	3	0	1
97/08	16	0	35	3	0	1	0	0	0	0	110	4	0	1	2	1	0	2	0	4
97/09	8	0	12	3	0	1	0	0	0	0	75	7	0	0	0	0	2	2	2	2
97/10	10	0	13	1	0	2	1	0	0	1	72	10	0	1	3	4	0	4	2	7
97/11	4	0	7	0	0	0	0	0	0	0	78	18	0	0	1	1	3	4	0	3
97/12	7	0	24	0	0	0	0	0	0	0	52	10	0	1	1	0	1	2	1	3
98/01	12	0	29	0	3	1	0	0	0	0	121	18	0	0	0	0	0	1	0	4
<b>Total</b>	141	0	269	10	8	6	2	0	0	3	802	136	16	9	14	8	16	35	9	28

\*Number of /16 blocks allocation from APNIC

# Transaction of IP Address Assignments



# IP Address Assignments by JPNIC Member ISPs

Year/ Month	*1	*2	*3	*4	*5	*6	# of assignments(smaller than /24)							
							/25	/26	/27	/28	/29	/30	/31	/32
97/02	927	94	422	478	873	120	61	65	139	129	71	9	0	4
97/03	695	51	538	374	423	115	42	78	99	113	49	12	0	1
97/04	810	59	684	574	353	76	63	68	105	243	165	10	0	4
97/05	1071	64	865	740	604	159	40	59	80	401	184	3	0	2
97/06	1354	96	1195	1112	391	77	42	72	109	701	315	8	0	1
97/07	1394	87	1185	1062	478	146	47	51	94	667	247	6	0	0
97/08	1417	105	1258	1157	430	78	44	71	78	719	382	5	0	0
97/09	1792	121	1552	1475	458	145	37	40	62	993	493	5	0	0
97/10	1723	158	1467	1423	554	129	27	27	93	921	489	6	0	2
97/11	1640	186	1376	1354	646	101	41	44	64	871	406	1	0	1
97/12	1694	175	1419	1429	377	124	24	38	72	927	478	6	0	0
98/01	2198	192	1930	1919	378	101	20	40	60	1179	736	4	0	0
<b>Total</b>	<b>16715</b>	<b>1388</b>	<b>13891</b>	<b>13097</b>	<b>5965</b>	<b>1371</b>	<b>488</b>	<b>653</b>	<b>1055</b>	<b>7864</b>	<b>4015</b>	<b>75</b>	<b>0</b>	<b>15</b>

\*1 # of assignments

\*3 # of charged assignments

\*5 # of assigned/allocated C class addresses

\*2 # of returns

\*4 # of assignments smaller than /24

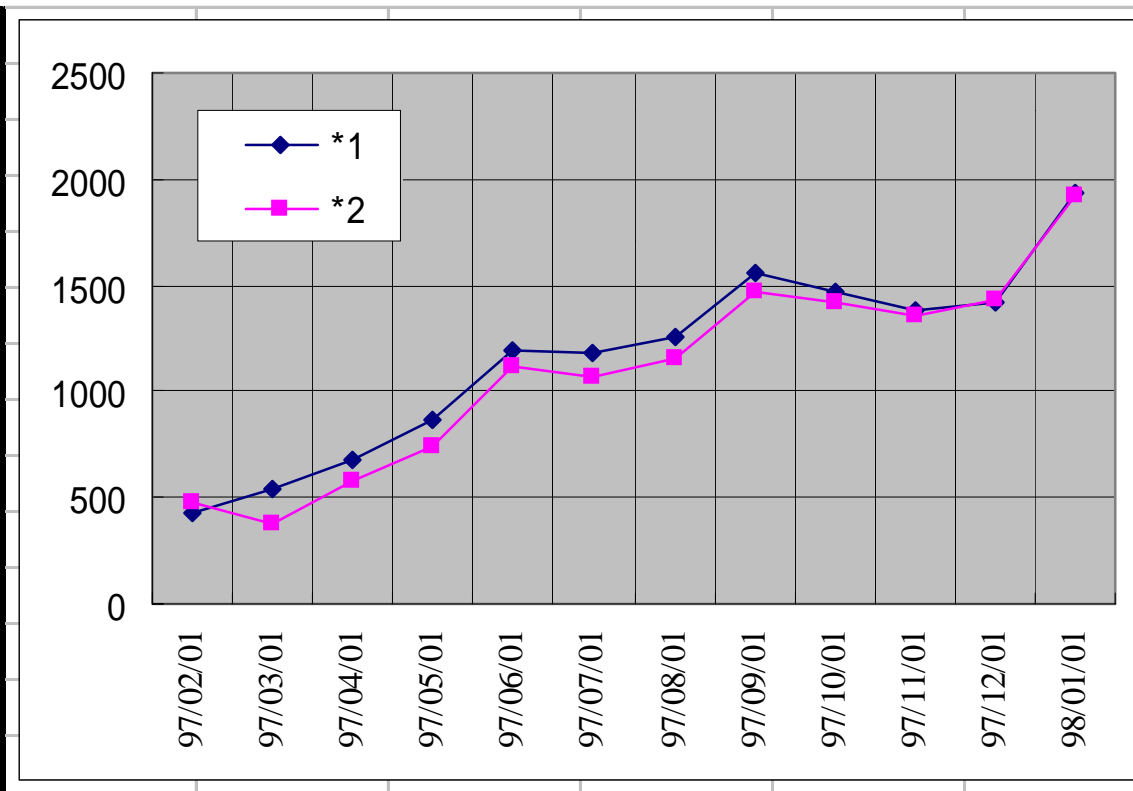
\*6 # of in-addr.arpa. delegate requests  
for divided C classes

Feb. 18, 1998

Japan Network Information Center

# Number of Assignments Smaller Than /24 by JPNIC Member ISPs

YY/MM	*1	*2
97/02	422	478
97/03	538	374
97/04	684	574
97/05	865	740
97/06	1195	1112
97/07	1185	1062
97/08	1258	1157
97/09	1552	1475
97/10	1467	1423
97/11	1376	1354
97/12	1419	1429
98/01	1930	1919
Total	13891	13097



\*1 # of charged assignments

\*2 # of assignments smaller than /24

Feb. 18, 1998

Japan Network Information Center

# AS Number Assignments

---

- Ⓒ 160 AS numbers are delegated to JPNIC
  - 2497-2528 from InterNIC
  - 4672-4735 from APNIC
  - 7500-7531 from APNIC
  - 7660-7691 from APNIC
- Ⓒ 137 AS numbers are assigned
  - 2497-2528, 4672-4735, 7500-7531, 7660-7668